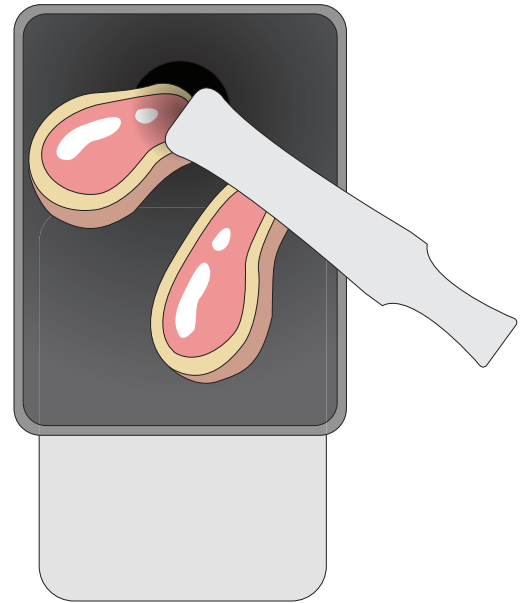


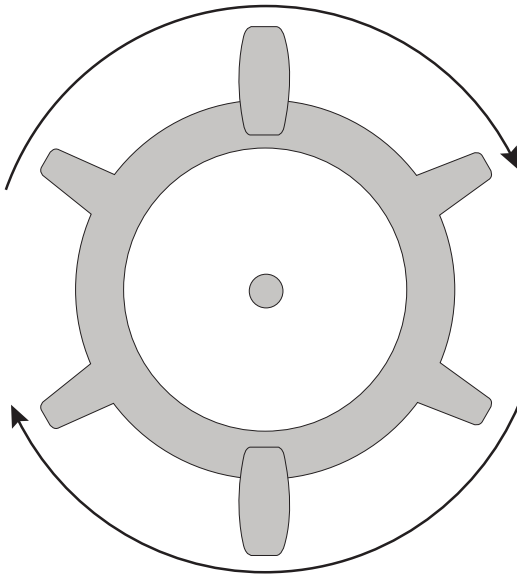
1

Place your meat on the top pan and turn on the mincer



2

push the meat down the hole as evenly as possible using the plastic pusher. Turn off after completion.



3

To replace the plates unscrew the front panel. Remove the old plate and slot on the new. Screw back on the front. To add the sausage attachment unscrew the threaded front place the sausage attachment and screw back on the front

Cleaning

To clean the mincer make sure that the mincer is turned off and unplugged.

Unscrew the side bolt and the disengage the metal grinder from the motor housing.

Unscrew the front face and remove all of the plates.

Wash all of the parts of the Grinder in warm soapy water.

Dry the Grinder and place on a wooden or plastic surface to avoid rust.

After the Mincer is dry, coat the inside with vegetable oil or olive oil to prevent rusting.